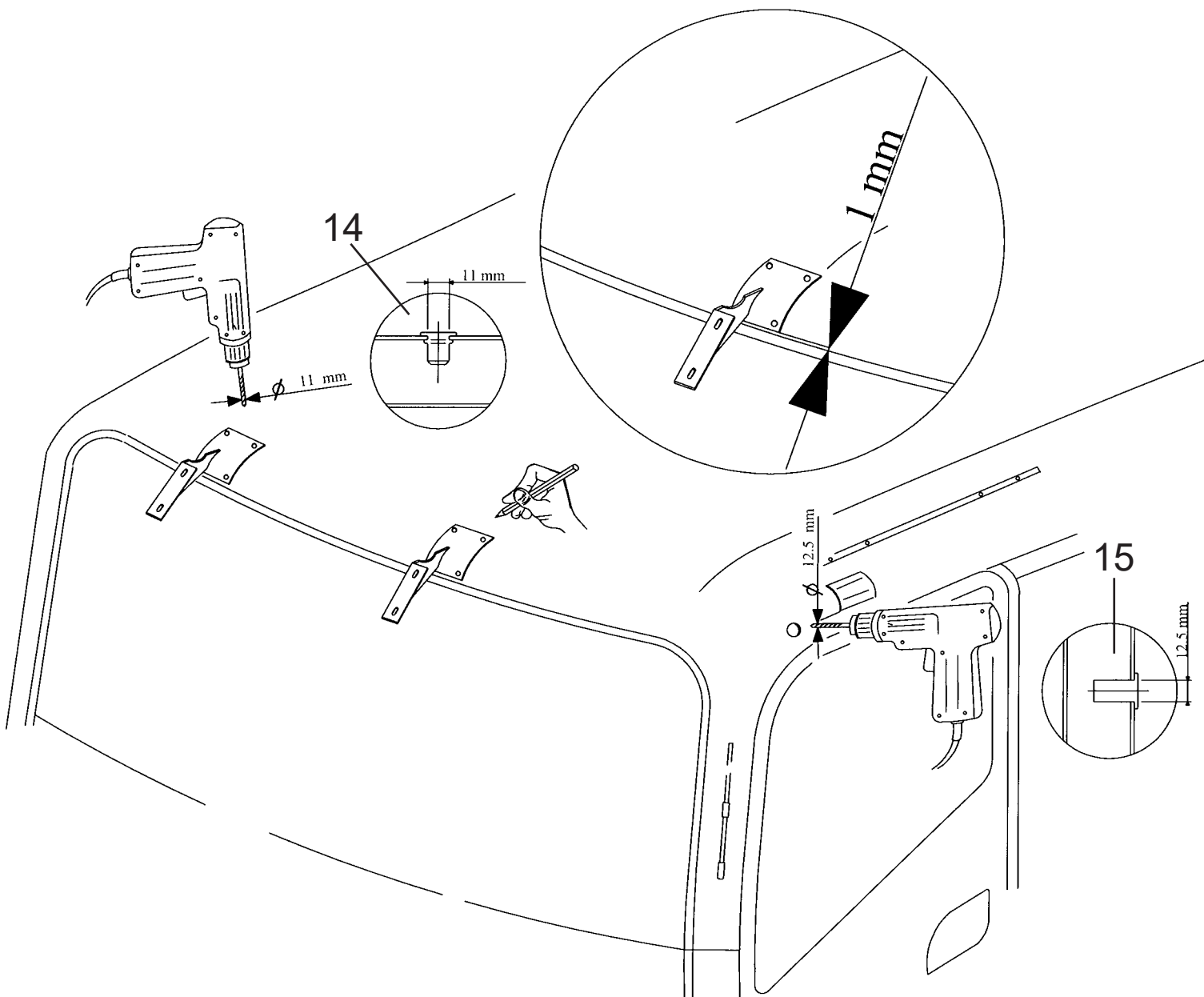


5105 Mitsubishi Canter Fuso single / double cabin Mounting instructions

1. Acrylic part 1 pc 2. Center bracket 2 pcs
 3. Cover hat 8 pcs 4. Cover collar 8 pcs
 5. Screw M6x30mm 8 pcs 6. Rubber washer 6mm 8 pcs
 7. Rubber washer 3mm 4 pcs 8. Screw M6x40mm 4 pcs
 9. Washer M6x22mm 4 pcs 10. Nylok M6 4 pcs 11. Hex. screw M8x20mm 8 pcs
 12. Washer M8x17mm 8 pcs 13. Rubber gasket 8 pcs 14. Rivet nut M8 8 pcs 15. Rubber wellnut M6 4 pcs



5105 Mitsubishi Canter Fuso single / double cabin Mounting instructions

apply sikaflex 252 between the
roof and the center bracket

