

# HYBRID 6200



HIGH END LOOKS | HIGH END PERFORMANCE

Unique and Original Boreman Design



New Design  
Light Weight Heat Sink



## Product Features:

- Unique and Original Boreman Design
- Offering Ultimate Performance with a beautiful Aerodynamic design
- Vacuum - Metalised Reflector - Delivering Extreme Long Range Visibility
- 5 x CREE 11W - Extreme High Power LED's
- Lumens: 6875lm
- Housing: Powder Coated Die Cast Aluminium
- High quality Mounting Brackets
- New Design Light Weight Heat Sink
- Connector: AMP 3 Wire (AMP 282105-1)
- 10 x CREE - 0.42 Watt - Position Light
- ECE R10/R7/R112
- Supplied with Waterproof Connector
- Temperature Range: -40°C ~+50°C
- Current Draw: 6.04 amp@12v & 2.44 amp@24v
- Life Span: 30,000+ hours
- Weight: 1.7 Kilo



Metalised Reflector -  
Delivering Extreme Long Range Visibility

## Information:

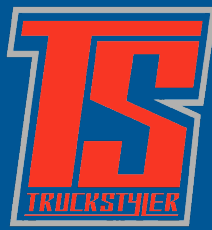


Part No.:	Weight:	Housing:	Connector:	Lumens:	Life Span:
Driving Light	1.7 Kilo	Powder Coated Die Cast Aluminium	Waterproof	6875	30,000+ Hours

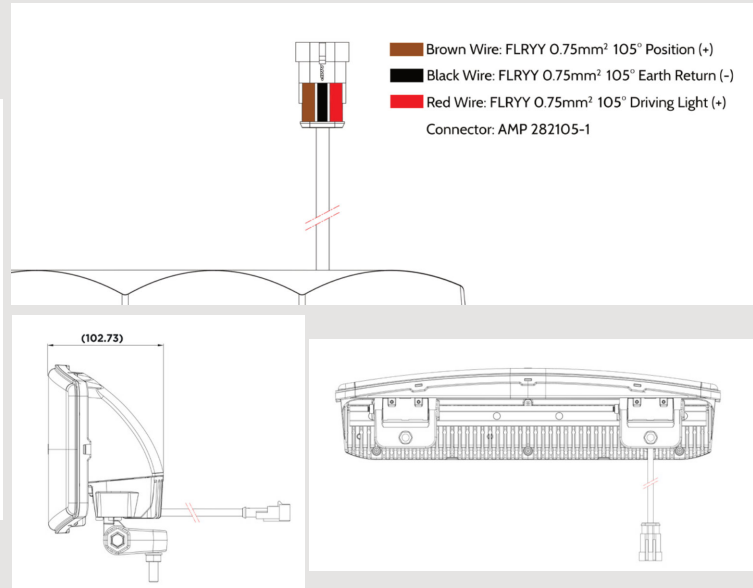
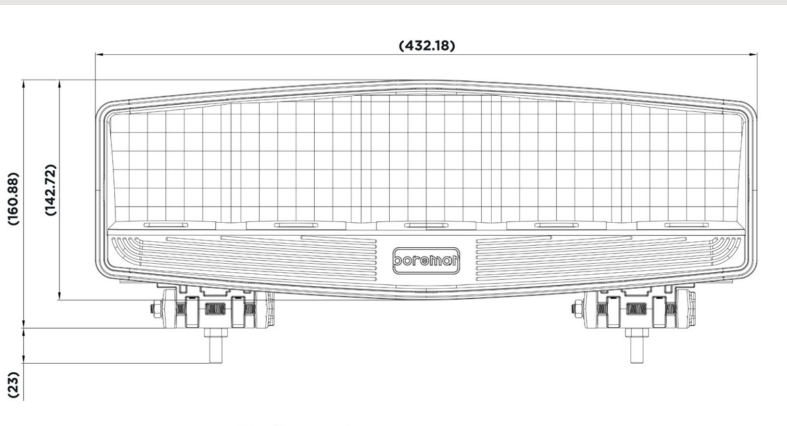
Available from your nearest dealer

[www.truckstyler-shop.de](http://www.truckstyler-shop.de) | [info@truckstyler-shop.de](mailto:info@truckstyler-shop.de) | Tel: +49(0) 7584/ 6409780

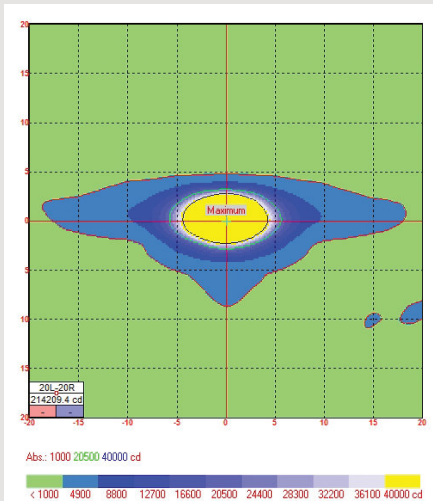
# HYBRID 6200



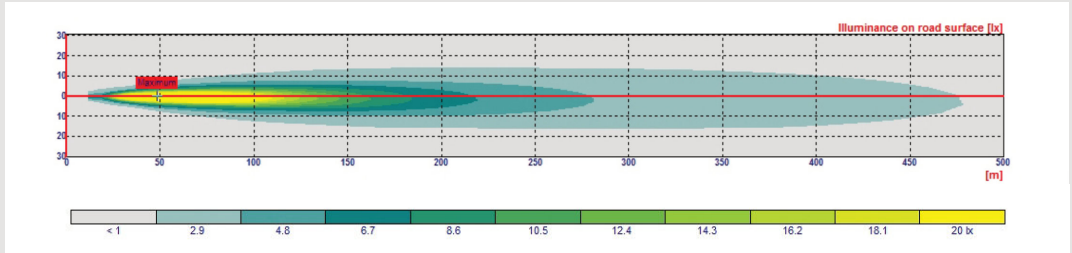
## Dimensions:



## Beam Pattern:



## Light Distribution:



## Side and Rear View of Lamp:

